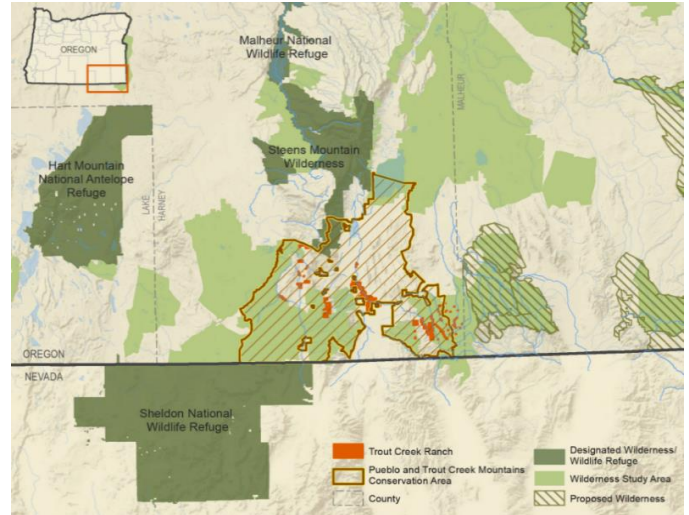


Trout Creek Ranch Visitor Guidelines

The Oregon Desert Land Trust (ODLT) owns nearly 17,000 acres of private land spread across the Trout Creek Mountains, Pueblo Mountains and Trout Creek Meadows. Our goal for the Trout Creek Ranch and Pueblo Mountains Conservation Project is to maintain or improve the health and resiliency of soil, water, wildlife, and vegetation.

We manage the vast majority of ODLT lands to maintain access to surrounding public lands. HOWEVER, we do limit access to portions of our property to avoid conflicts with conservation objectives. Any restrictions are intended to benefit land health and we have made every reasonable attempt to provide access in a way that is consistent with responsible land stewardship and public safety.



View detailed maps: [Overview](#), [Pueblo Mountains inholdings](#), [Trout Creek Mountains inholdings](#), [Ranch Headquarters](#)

Access and Recreation Guidelines

Trout Creek Ranch (TCR) lands support public access and various forms of recreation. TCR includes both working and wild lands and therefore management approaches and suitability for public use can vary. The following additional guidelines apply to TCR management units which are outlined on the [Access Overview](#) map:

Backcountry lands – These TCR lands are open to non-motorized access and recreation (e.g. hiking, wildlife viewing, horseback riding, etc.) although properties may be seasonally closed to the public to accomplish conservation objectives. Refer to the [Access Overview](#) map for guidance on which land are open to public hunting and fishing, subject to State of Oregon regulations.

Trout Creek Ranch Headquarters - These lands are CLOSED to public access and use except when visiting as part of ODLT-led group, with an ODLT-approved partner, or with ODLT written approval. These lands are also CLOSED to hunting and fishing unless specifically authorized in writing by ODLT AND permitted under state of Oregon regulations.

On ALL TCR lands:

- Where motorized vehicle and bike travel is allowed, this use is limited to existing roads and trails.
- Avoid parking on dry vegetation that could ignite wildfires.
- Please limit travel when roads are wet and muddy as these conditions damage roads and limit future access.
- Select routes may be closed with locked gates.
- Please leave gates as you found them and do not cut fences.
- Please carry out all garbage and bury human waste.
- The use of drones/UAVs and the placement of wildlife cameras is prohibited.
- Collecting of any objects including plants, rocks and antlers is prohibited.
- Trapping animals, killing of unprotected non-game wildlife or sage-grouse, and target shooting is prohibited.
- Overnight camping and campfires are prohibited unless specifically authorized in writing by ODLT.